

Mercer+Mettle® Women's Stretch Crepe Long Sleeve Camp MM2013

Taking a more refined approach to tailoring, this chic blouse offers movement and ease in a fine crepe fabric and soft fit. Adjustable button cuffs and a trend-right dropped hem add style and versatility for day to night wear.

Fabric+Weight

- 4.3-ounce, 95/5 poly/spandex

Features+Benefits

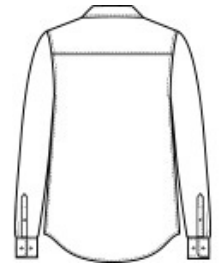
- Open, camp-style collar
- Double patch pockets
- Adjustable button cuffs
- Drop hem
- Back yoke

CARE INSTRUCTIONS

Machine Wash Cold With Like Colors. Only Non-Chlorine Bleach If Needed. Tumble Dry Low. Remove Promptly. Cool Iron If Needed.

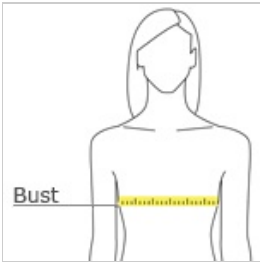


front



back

HOW TO MEASURE



BUST

Measure under the arm and around the fullest part of the bust with arms down, keeping tape horizontal.

SIZE CHART

| | XS | S | M | L | XL | 2XL | 3XL | 4XL |
|------|-------|-------|-------|-------|-------|-------|-------|-------|
| Size | 2 | 4/6 | 8/10 | 12/14 | 16/18 | 20/22 | 24/26 | 28/30 |
| Bust | 32-34 | 35-36 | 37-38 | 39-41 | 42-44 | 45-47 | 48-51 | 52-55 |

COLOR INFORMATION



Anchor Grey
PMS 426C



Deep Black
PMS BLACK C



Ivory Chiffon
PMS 9043C



Townsend Green