



Brooks Brothers® Women's Cotton Stretch V-Neck Sweater BB18401

A super-soft evolution of the classic sweater silhouette, designed for year-round layering and unsurpassed comfort.

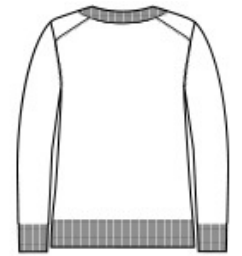
- 70/30 pima cotton/nylon
- Full-fashioned throughout
- 1x1 rib neck, cuffs and hem
- Back shoulder seam

CARE INSTRUCTIONS

Machine Wash Cold With Like Colors. Gentle Cycle. Only Non-Chlorine Bleach When Needed. Reshape And Lay Flat To Dry. Cool Iron If Necessary.



front



back

HOW TO MEASURE



BUST

Measure under the arm and around the fullest part of the bust with arms down, keeping tape horizontal.

SIZE CHART

| | XS | S | M | L | XL | 2XL | 3XL | 4XL |
|------|-------|-------|-------|-------|-------|-------|-------|-------|
| Size | 2 | 4/6 | 8/10 | 12/14 | 16/18 | 20/22 | 24/26 | 28/30 |
| Bust | 32-34 | 35-36 | 37-38 | 39-41 | 42-44 | 45-47 | 48-51 | 52-55 |

COLOR INFORMATION



Deep Black
PMS BLACK C



Light Shadow Grey
Heather
PMS HEATHER



Navy Blazer
PMS 533C



Pearl Pink
PMS 705C